



Comhairle Chontae na Gaillimhe
Galway County Council

Temporary Closure of Roads

Roads Act 1993 – Section 75

Roads Regulations 1994 – Article 12

Notice of Decision

Tuam, Athenry/Oranmore, Loughrea & Ballinasloe North Municipal Districts

Notice is hereby given that Galway County Council has made an order closing the following routes to facilitate hosting of Galway Motor Rally 2025;

Stages: 1, 4 & 7
Times: 7:30 a.m. to 5:30 p.m.
Date: Saturday 1st February, 2025

Route:

Along the L6136 from its junction with L2112 at Biggera Beg to its junction with L6135 at Pollnahallia to its junction with L2109 at Bohercuill to its junction with L6171 at Manuslynn to its junction with L2108 at Kilcoona to its junction with L6130 at Liss to its junction with L6167 at Gortrory to end and 300m along all roads leading to the above route.

Alternative Route

From Headford on N84 to N6 at Galway to N17 at Galway to R332 at Tuam to N4 at Kilmaine to Headford.

Stages: 2, 5 & 8
Times: 8:00 a.m. to 5:45 p.m.
Date: Saturday 1st February, 2025

Route:

Along the L6125 from its junction with N84 at Ballynakillew to its junction with L6124 at Ballyconlought to its junction with L2103 at Ballynalacka to its junction with L6124 at Luggawannia to its junction with L2103 at Cargin to its junction with L6118 at Carrownakib to its junction with L6117 at Ulrith to its junction with L2101 at Clerhaun to its junction with L6122 at Clarehaun to finish and 300m along all roads leading to the above route.

Alternative Route

From Cloughanower on N84 to Headford on N84 to Ballyfruit on R33

Stages: 3, 6 & 9
Times: 8:45 a.m. to 6:30 p.m.
Date: Saturday 1st February, 2025

Route:

Along the L2105 from its junction with R333 at Caherlistrane to its junction with L6103 at Caherakenny to its junction with L2105 at Beagh More to its junction with L6105 at Klower to its junction with L2106 at Cloonmore to its junction with L6139 at Treanbaun to its junction with L6106 at Carrowbeg North to its junction with L6215 at Thomastown to finish and 300m along all roads leading to the above route.

Alternative Route

From Headford on N84 to N6 at Galway to N17 at Galway to R332 at Tuam to N4 at Kilmaine to Headford.

Stages: 10 & 13
Times: 8:30 a.m. to 3:30 p.m.
Date: Sunday 2nd February, 2025

Route:

Along the L3111 from its junction with L3107 at Carrowntober West to its junction with L7152 at Graigabbey South to its junction with L3115 at Attymon to its junction with L7168 at Laragh Cross Roads to its junction with L7169 at Lisduff to its junction with L7171 at Knockroe to finish and 300m along all roads leading to the above route.

Alternative Route

From Athenry on R348 to R359 at Killeen Cross to R358 at Castleblakeney to N63 at Mountbellew to R347 at Anagh Hill to Athenry.

Stages: 11 & 14
Times: 9:15 a.m. to 4:00 p.m.
Date: Sunday 2nd February, 2025

Route:

Along the L3118 from its junction with R348 at Ballyfa to its junction with L7172 at Cloonbenis to its junction with L7174 at Gortmore to its junction with L7173 at Gortmore to its junction with L3118 at Streamsford to its junction with L7176 at Clooncah to its junction with L71766 at Clooncah to its junction with L7448 at Dooghcloon to its junction with L7176 at Shanballard to its junction with L74195 at Shanballard to its junction with L7419 at Corskeagh to its junction with L34073 at Kinreask to its junction with L3407 at Garrymore to end and 300m along all roads leading to above route.

Alternative Route

From Athenry on R348 to R359 at Killeen Cross to R358 at Castleblakeney to N63 at Mountbellew to R347 at Anagh Hill to Athenry.

Stages: 12 & 15
Times: 10:00 a.m. to 4:45 p.m.
Date: Sunday 2nd February, 2025

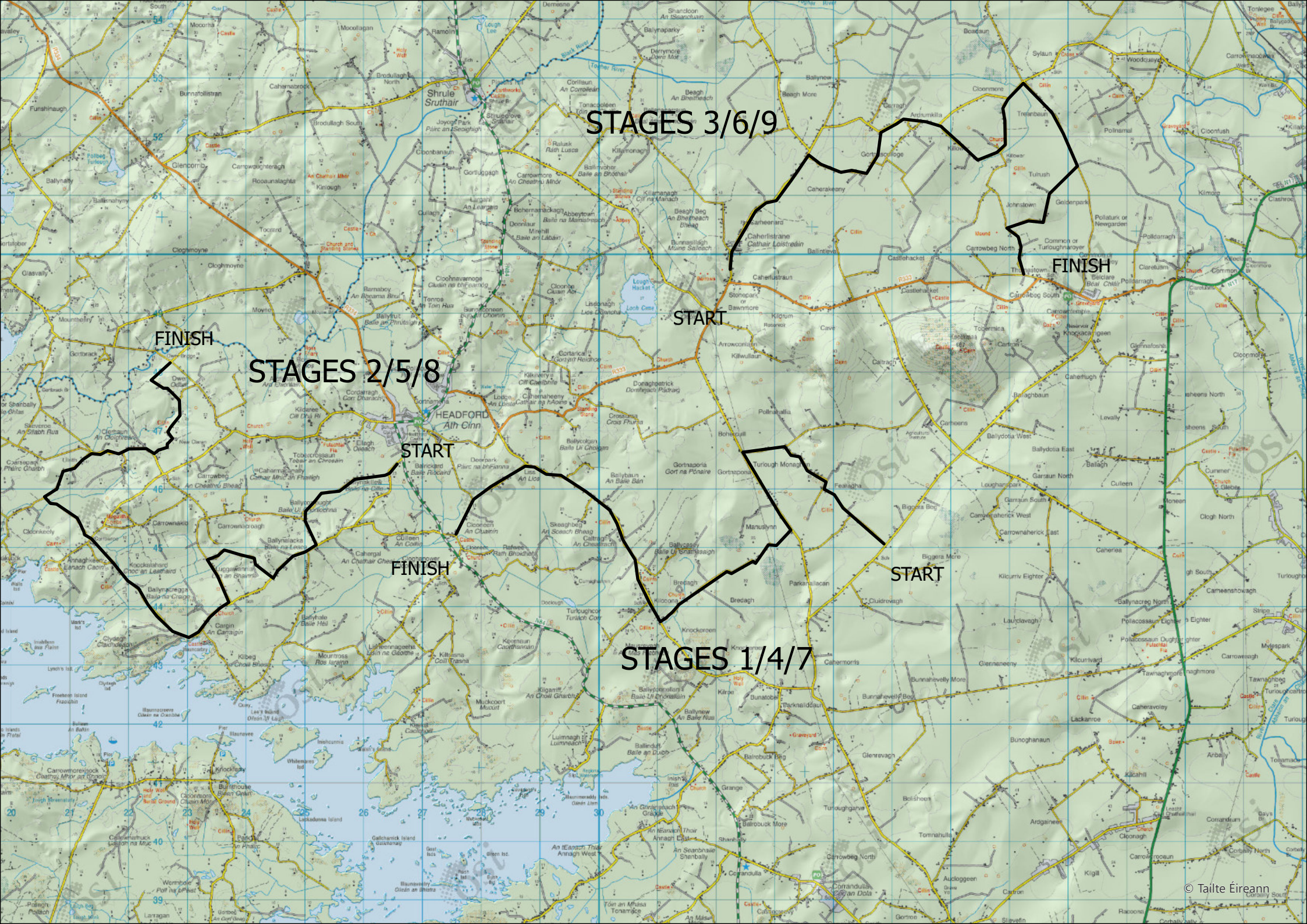
Route:

Along the L3204 from its junction with R339 at Menlough Commons to its junction with L7231 at Menlough Oughter to its junction with L7230 at Menlough Eighter to its junction with L7232 at Menlough Eighter to its junction with L3204 at Menlough Eighter to its junction with L3202 at Killoscobe to its junction with L7213 at Mullaghmore South to its junction with L7214 at Mullaghmore South to its junction with L7313 at Ballinrooaun to its junction with L3201 at Windfield Lower to its junction with L7307 at Windfield Lower to its junction with L7207 at Windfield Demesne to its junction with L7208 at Coooororta to its junction with L7203 at Dereen to its junction with L 7201 at Cloonkeen to end and 300m along all roads leading to above route.

Alternative Route

From Athenry on the R348 to R359 at Killeen Cross to R358 at Castleblakeney to N63 at Mountbellew to R347 at Anagh Hill to Athenry.

Diversion signage will be in place.



STAGES 3/6/9

FINISH

START

STAGES 2/5/8

FINISH

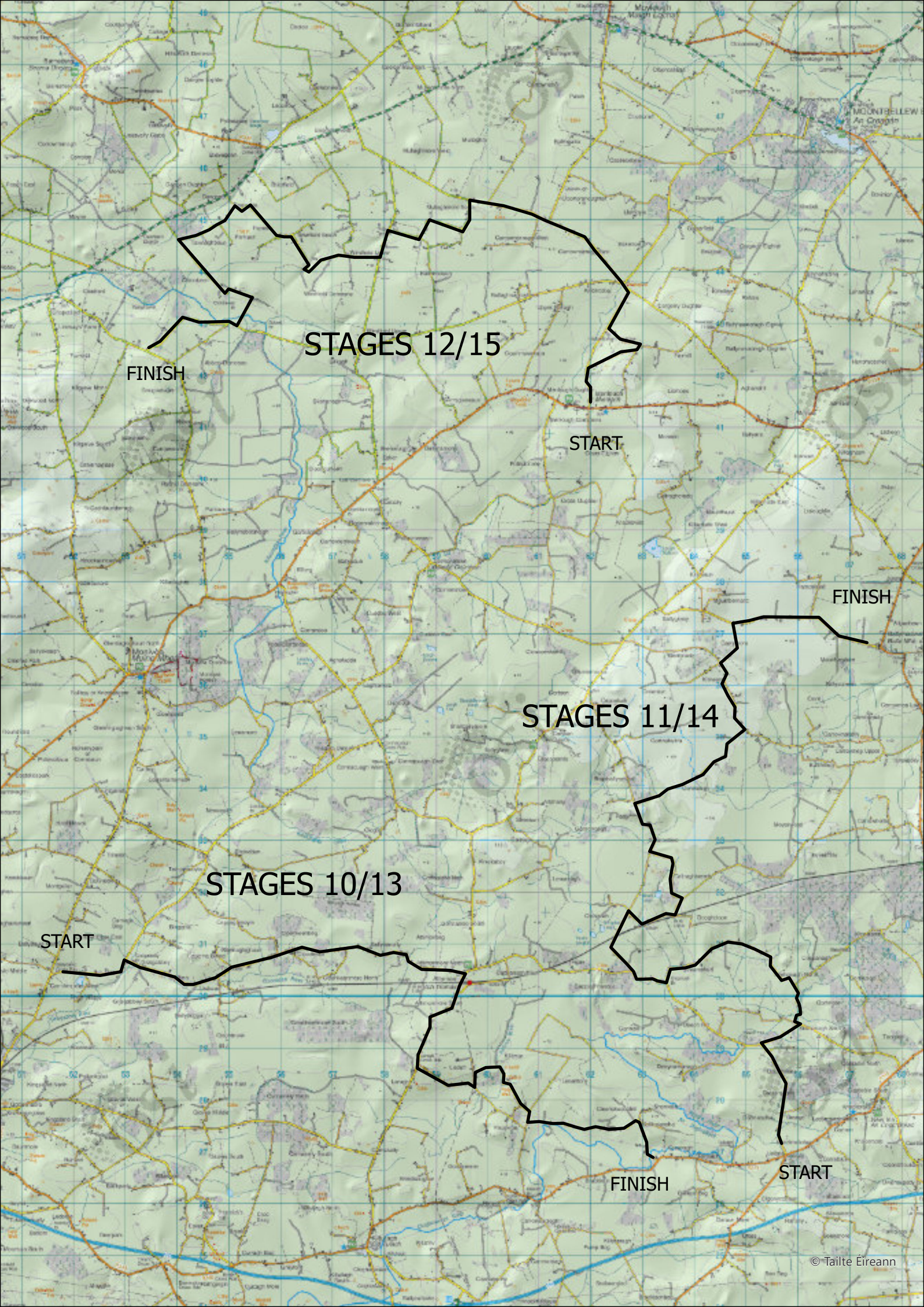
START

FINISH

START

STAGES 1/4/7

START



STAGES 12/15

FINISH

START

FINISH

STAGES 11/14

STAGES 10/13

START

FINISH

START

STAGES 1/4/7

R332

N4

6135

6130

2109

6136

6167

2108

START

FINISH

6171

N17

N84

LOUGH CORRIB
Loch Coirib

ROUTE

ALTERNATIVE ROUTE

N6

STAGES 2/5/8

R334

FINISH

START

N84

6122

2101

6117

6118

2103

6125

6124

2103

6124

ROUTE

ALTERNATIVE ROUTE

STAGES 3/6/9

R332

N4

6103 2105 6105 2106 6139 6106

START

6215 FINISH

N17

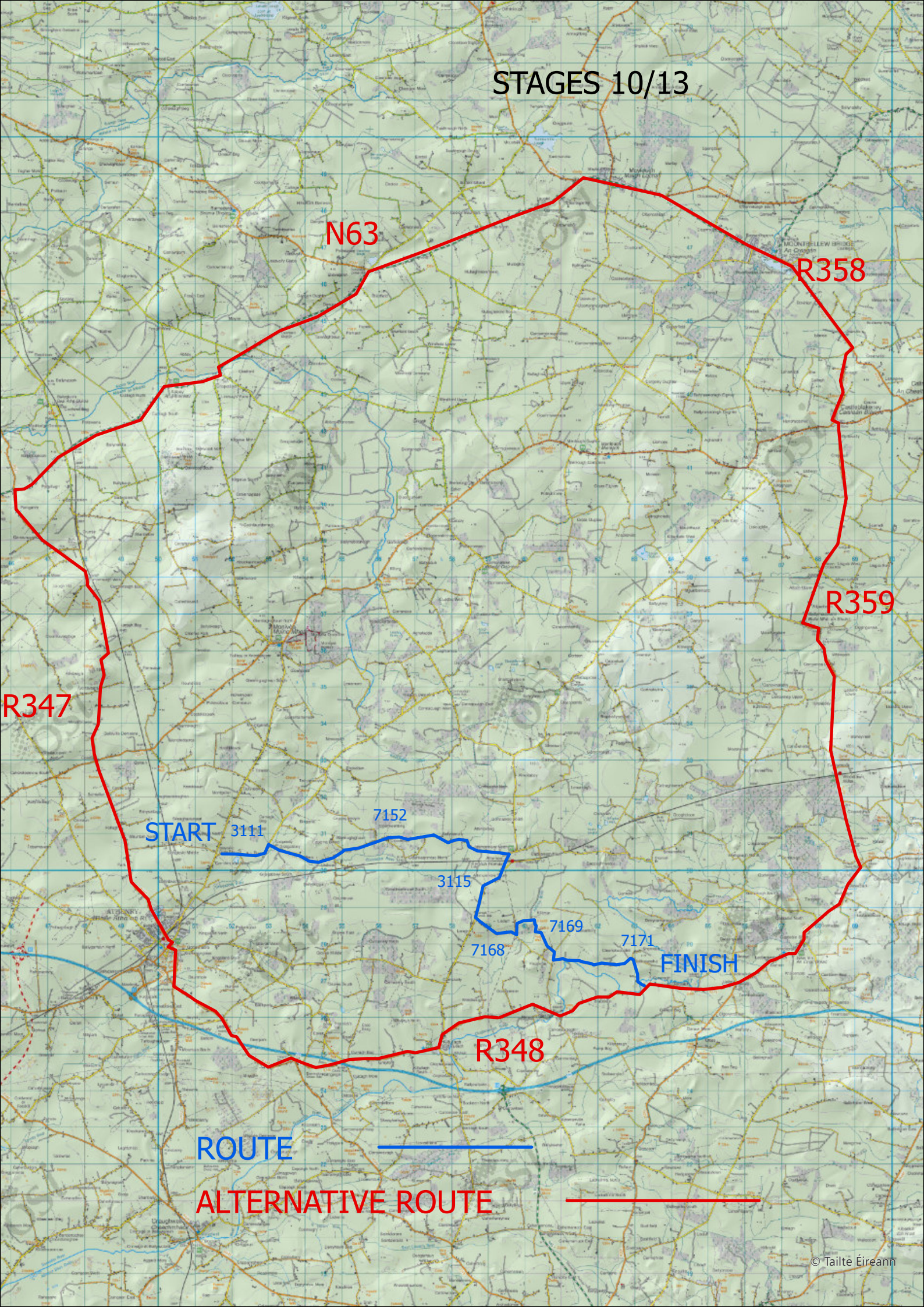
N84

ROUTE

ALTERNATIVE ROUTE

N6

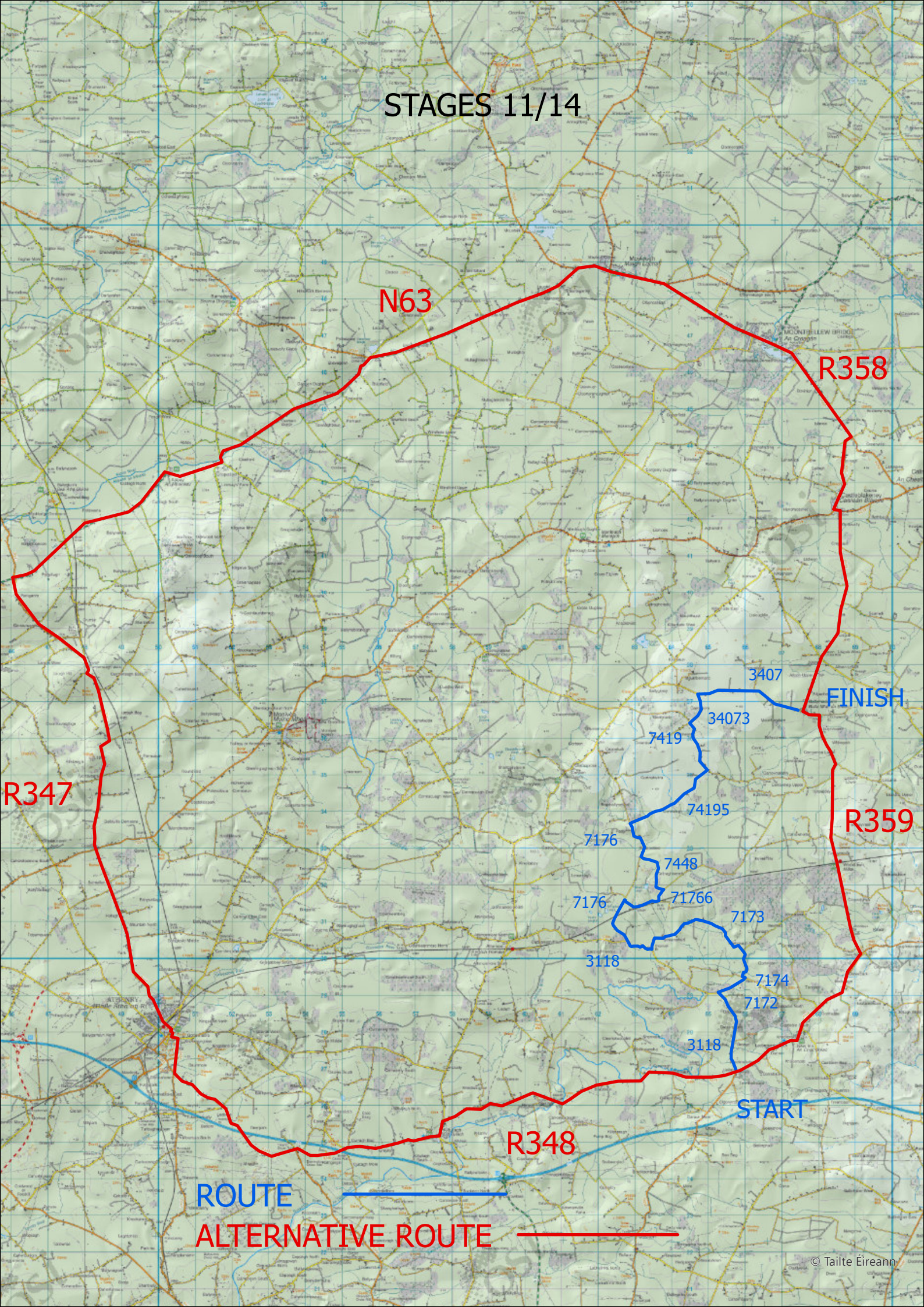
STAGES 10/13



ROUTE

ALTERNATIVE ROUTE

STAGES 11/14



N63

R358

R347

FINISH

R359

3407

34073

7419

74195

7176

7448

7176

71766

7173

3118

7174

7172

3118

START

R348

ROUTE

ALTERNATIVE ROUTE

STAGES 12/15

N63

R358

FINISH

START

R359

R347

R348

ROUTE

ALTERNATIVE ROUTE

